

Image Access Scanners

Intelligent Products Driven by Design and Function



Introducing
Bookeye® 5!

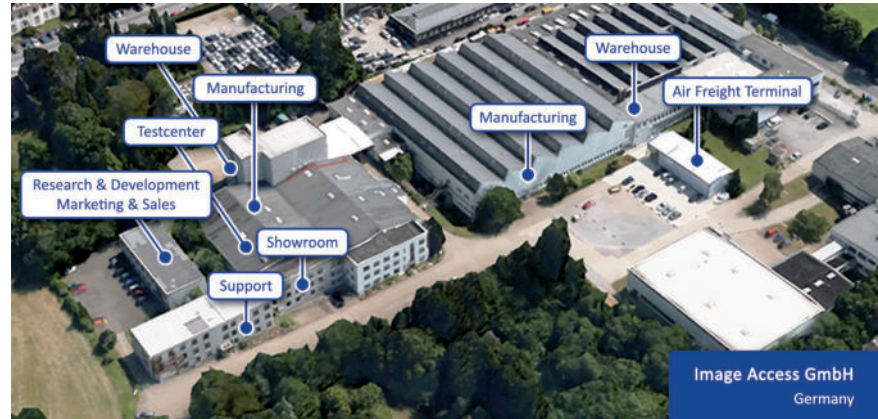


Product Catalog 2020



World Headquarters

Image Access GmbH
Hatzfelder Straße 161-163
42281 Wuppertal, Germany
Phone: +49 (202) 270 580



U.S. Headquarters

Image Access LP
2511 Technology Drive, Suite 109
Elgin, IL 60124 USA
Phone: +1 (224) 293-2585

For more information, visit us at:

www.imageaccess.de
www.imageaccess.us



SCAN ME!

©03/2020 by Image Access GmbH. All rights reserved. Scan2Net®, Scan2Pad®, Bookeye® and WideTEK® are registered trademarks in the United States, Europe and other countries. All other brand names and trademarks are property of their respective owners. All specifications are subject to change without notice.

Introducing Bookeye® 5



- ✓ Color book scanner for formats up to A3+, easily upgradable to 600 dpi professional version
- ✓ V-shaped magnetically coupled book cradle 120 - 180 degrees
- ✓ Bookfold correction, automatic finger & thumb removal, auto crop & deskew and anti-reflection mode
- ✓ Large 21" full HD multitouch screen, 2nd preview screen optional
- ✓ Fulfills all criteria of the FADGI *** guidelines and ISO 19264-1 level B
- ✓ Scan Wizard for intuitive self service. Output to FTP, mail, SMB drives, USB 3.0 port
- ✓ Scan2Pad/Scan2Mobile—Wireless operation & storage (optional)
- ✓ Operation in dark mode, 20 languages supported
- ✓ Digital color balance, integrated ICC profile
- ✓ Easy installation via Scan2Net® technology

The next generation of the acclaimed Bookeye® family of overhead book scanners

Fully reengineered, the Bookeye® 5 V3 is the smallest of a new generation of eco-friendly, easy to operate book scanners. Bookeye 5 V3 is a true scanner solution, not just a digicam on an expensive frame. Specifically designed as a self-service book scanner for formats 50 % larger than A3 (390 x 480mm / 15.3 x 18.9 inch), it delivers excellent image results.

Scanner Optics	CCD camera, scans in color, grayscale, B&W
Resolution	400 x 400 dpi scanner resolution 600 x 600 dpi scanner resolution (optional)
Document Size	390 x 480 mm (15.3 x 18.9 inches)
Fastest Speed	A3+ @ 150 dpi: 0.8 seconds
Color Depth	48 bit color, 16 bit grayscale
Scan output	24 bit color, 8 bit grayscale, bitonal, enhanced half-tone
Output Formats	Multipage PDF (PDF/A) and TIFF, JPEG, JPEG 2000, PNM, PNG, BMP, TIFF (Raw, G3, G4, LZW, JPEG), AutoCAD DWF, JBIG, DjVu, DICOM, PCX, Postscript, EPS, Raw data
Size H x W x D & Weight	720 x 510 x 540 mm (28 x 20 x 21 inches) 29 kg (64 lbs.)
Quality (min.)	ISO 19264-1 level B, FADGI ***
Power Consumption	< 0.5 W (Sleep) / 1.5 W (Standby) / 40 W (Ready to scan) / 110 W (Scanning)

Three Models Available

Depending on your application needs, select the Bookeye 5 V3 Basic, Kiosk or Professional model. If your requirements become more demanding over time, you can upgrade to the next level model easily, protecting your initial investment while being flexible enough for growth.

For every application requirement: Basic, Kiosk or Professional

Basic

The Bookeye 5 V3 Basic model is the entry level model. It offers the same scanning functionality and speed as the other levels at the lowest possible cost.

Kiosk

The Bookeye 5 V3 Kiosk model includes all of the features of the Basic model plus the Scan2Pad application for scanning and operation with any mobile device, a foot switch and the Image Access Full Coverage Warranty for one year. Up to five years of Full Coverage Warranty are optionally available on all models.

Professional

The Bookeye 5 V3 Professional model includes all of the features of the Basic model, but has a higher resolution of 600 dpi and client interface for 3rd party software, to meet the highest quality standards. It also includes a foot switch and the Full Coverage Warranty for one year.

Bookeye® 5



400 x 400 dpi	400 x 400 dpi	600 x 600 dpi
Optional	Full coverage warranty 1 year	Full coverage warranty 1 year
DIN A3+ scan area	DIN A3+ scan area	DIN A3+ scan area
Flat and V cradles	Flat and V cradles	Flat and V cradles
21" full HD multitouch screen	21" full HD multitouch screen	21" full HD multitouch screen
Live preview mode	Live preview mode	Live preview mode
Laser-assisted book fold correction	Laser-assisted book fold correction	Laser-assisted book fold correction
Dark mode operation	Dark mode operation	Dark mode operation
Optional	Foot switch	Foot switch
Optional	Scan2Pad, WiFi Hotspot	Optional
Optional	Optional	Client interface
Optional	Optional	Workflow integration

OCR option**	Yes	Yes	Yes
Scan2Pad®	Yes	Yes	Yes
Foot Switch	Yes	Yes	Yes
Full Coverage Warranty Basic + Kiosk	Yes	Yes	Yes
Full Coverage Warranty Professional	Yes	Yes	Yes

✓	included at no extra cost
Yes	optional, order separately
✗	not available for this model



- ✓ Easy three button operation: Start -- Scan -- Send
- ✓ V-shaped magnetically coupled book cradles, scan in flat or V mode 120 - 180 degrees
- ✓ Large 21" full HD multitouch screen, 2nd preview screen optional
- ✓ Operation in dark mode enhances scan quality and improves operation through less light reflection
- ✓ Live preview function shows the document position in live video for optimal placement
- ✓ Laser assisted book fold correction, scan bound documents without annoying shadows
- ✓ Automatic finger & thumb removal, auto crop & deskew
- ✓ Easy installation via Scan2Net® technology

The Bookeye 5 V3 book scanner is fast and easy to operate, affordable, but with the power of a production book scanner. It is so small that it can be set up on any desktop or workspace. Installation is simple, you will be scanning within minutes after taking it out of the box. Easy, fast and affordable.

Running on the latest Scan2Net® firmware, the Bookeye 5 family is packed with so many new features and functions, you will want to see them all for yourself.

Work with the Bookeye 5 in dark mode to enhance scan quality and improve operation through less light reflection, or use the live preview functionality to place your document perfectly on the scanning bed before scanning.

A 21 inch full HD multitouch screen allows the operator to control image quality and make many modifications on the fly. Pinch and swipe on the touchscreen the same way you would on a smartphone to zoom or move around in the image during preview.

There are three possible positions to attach the touchscreen: on the scanner neck, on the side of the scanner closer to the front or on the side of the scanner closer to the back, where you can angle the monitor in various degrees. It can also be used unattached, lying flat next to the scanner. Optionally a separate preview screen can be mounted to the neck, if the main touch is on the side.

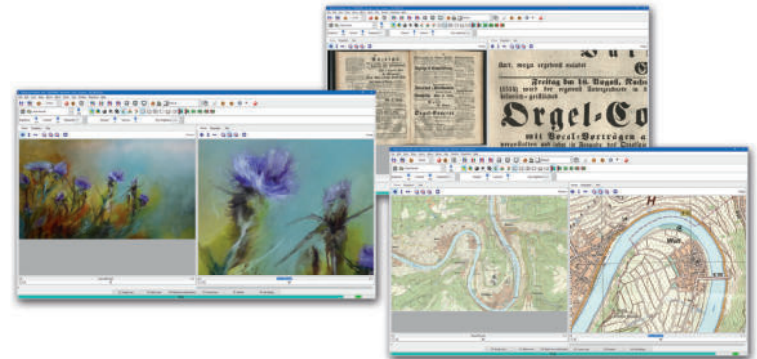


BatchScanWizard is a fast and easy to use software solution from Image Access for professional management of large scanning volumes and jobs. The software increases data throughput and reduces operational tasks substantially. BatchScanWizard is ideal for processing large volume scanning jobs but is just as useful for smaller volumes in which more advanced operations like page splitting or extracting specific areas on a document is required. A batch is started either using the foot switch or the user interface of the BatchScanWizard.

In addition to being able to set standard scan parameters such as brightness, contrast, color mode or file format; BatchScanWizard includes Scan Tool, for predefining regions in a document to extract, scan and save as separate images. A previously scanned document can be modified and the resulting image quality improved without having to rescan.

The operator can configure frequently used functions and operations on hotkeys and activate them with the single press of a key. Even complex operations can be configured for hotkeys.

BatchScanWizard is available for purchase and for download online in the Customer Service Portal.



- ✓ Automated scanning of high volume source documents
- ✓ Easy configuration with templates
- ✓ Manage scan parameters in jobs
- ✓ On the fly modification of scanned images
- ✓ Hotkeys - frequently used operations at the press of a key
- ✓ Scan Tool - scan user definable sections of source documents
- ✓ Variable page splitting
- ✓ Time saving, high data throughput, perfect for production
- ✓ Purchase and download from Image Access Customer Service Portal



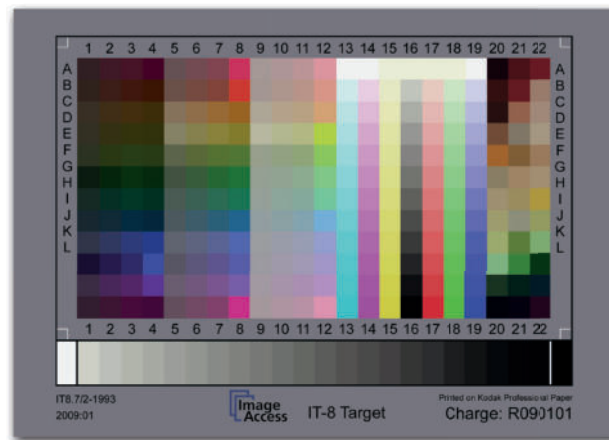
Scan2OCR is an optional software function which allows the user to scan in job mode and to OCR the entire page or multiple pages scanned, using multipage PDF mode. The OCR process runs in the background so that you can continue scanning subsequent pages in the job. This function is useful when scanning complete source material such as books, legal files and other multipage documents for which the operator wants all of the text OCR'd.

Scan2OCR is based on the Tesseract OCR engine and the layout analysis software Leptonica. The Tesseract engine is considered one of the best OCR software engines available and currently supports more than 100 languages, including many from Asia.

The OCR engine runs in the background at a low priority level and uses all remaining computing power. The multitasking software will not slow down the scanning process. Many language packages can be downloaded for free from our portal and installed on the target scanner.



Scan2ICC is an online tool for creating and storing an individual ICC profile for a single Scan2Net® scanner. This service is a simple, cost efficient alternative to expensive, complicated third party software.



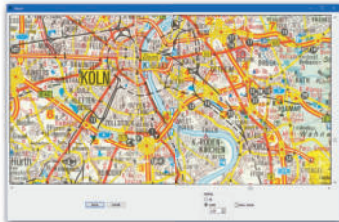
- ✓ Subscription for individual ICC profile for each Scan2Net® scanner
- ✓ True color output for copy applications
- ✓ Clear and simple operation
- ✓ Cost efficient subscription, available for purchase on the Customer Service Portal or ask for pricing

PerfectStitch



**The Easiest Way to
Make One Out of Two!**

**Download your trial version
from our homepage today!**



The PerfectStitch software add-on from Image Access is the easiest to use, most intuitive solution for fast and accurate stitching of two or more JPEG and TIFF images.

The high quality images generated by Image Access scanners can be stitched together perfectly in three simple steps. Double the scan area of your Image Access Scanner with PerfectStitch!

BCS-2®

BCS-2® is a solution for digitizing, post-processing and electronic publishing books, magazines and maps. BCS-2® can be used to control book scanners, flatbed, sheetfeed and microfilm scanners and copiers. The scan results of the job processes are seamlessly passed into workflow systems.

Applications

- Electronic document delivery: production of digitized material
- Internet / Intranet publication, access to e-mail systems
- Connection to CMS, DMS, archive and workflow systems

Order Management

- Integrated Order Management
- Management and export, and (re-) import of jobs
- Configurable profiles
- Editing, printing, and deleting jobs

- ✓ User defined formats, profiles for different styles, batch scanning of large volumes of documents and books
- ✓ Black border removal and deskew
- ✓ Automatic rotation after scanning - zoom, rotate, invert
- ✓ Thumbnails to view all scans in a scan job
- ✓ Format adaptation of different sizes on a target format template
- ✓ Flexible cropping, masking and page splitting
- ✓ MAPI interface for applications such as MS Outlook/Exchange, Lotus Notes, Mozilla Thunderbird, etc.
- ✓ Print jobs for single image, entire orders and printing and scanning in parallel

Worldwide Quality, Safety & Environment Certifications

Image Access scanners are environmentally friendly, comply to the highest security standards and do not interfere with other devices. We have also made sure that no harmful radiation in the form of electromagnetic emission and UV or infrared light exists. Because these kinds of scanners are heavy production machines with inherent risks to the operator, no one should operate a scanner from a vendor who cannot provide at least a safety report according to IEC/EN 62368.

Image Access scanners conform to the many national and international standards. Our scanners have been tested and certified by independent laboratories and we can also provide test reports of each standard on paper upon request.



Image Access GmbH
Hatzfelder Strasse 161-163
42281 Wuppertal
Germany

www.imageaccess.de



Image Access LP
2511 Technology Drive
Elgin, IL 60124
USA

www.imageaccess.us